

Landchat

Landcare in the Southern New England, No. 122, January - December 2023



Southern
New England
Landcare

Our mission is to **lead, connect** and **enable** our communities to reach their sustainability goals in a changing environment.

Welcome

Welcome to Landchat Number 122.

This year, Landchat 122 showcases a full 12 months of great achievements by members and friends.

Remember, membership is now free, so if you have changed any of your contact details this year, please let us know so we can update them on the membership system, and you can continue to enjoy all the great benefits. Happy reading!

Contents

2023 President's Report.....	2
Introducing Janet Hodge.....	3
Kristy Youman receives 2023 JWI Bequest	3
Achievements against Strategic Plan	4
2023 Member Musters	5
Around Our Groups.....	6
New Board Members	7
Landcare in the Guyra district.....	8
Introducing Elizabeth Rosser.....	9
Drought Resilient Pasture Landscapes	10
Rebooting Our Grazing Landscapes	11
Thunderbolt Project.....	12
Northern Tablelands Koala Partnership.....	14
Introducing Matt Elsley	15
Weedy Wasteland to Wildlife Wetland	20
Regent Honeyeater Project.....	22

No. 122, January - December 2023

Jill Moore-Kashima honoured for her service

The 2023 Coordinator's Choice has been awarded to Jill Moore-Kashima.

Jill's consistent mentorship and support of staff over many years has been very much appreciated.

The announcement was made and congratulations offered at the 2023 AGM on 15th November and the perpetual trophy was presented at a board and staff luncheon on 20th December.

Jill recently retired from her position on the board, having filled the role for eight years. Jill will still attend Member Musters as the representative of the Soil Health Forum.

Each year, the staff team nominate a worthy volunteer for the Coordinator's Choice Award.

Below - Jill Moore-Kashima pictured soon after receiving news of her award. Image courtesy of Janeen Robb.



2023 President's Report



The 2022-2023 financial year saw Southern New England Landcare Ltd contribute significantly to the health and wellbeing of the communities and the natural capital of our region.

Our members over the year have more than doubled. As a not-for-profit organization our strength is with having a strong membership base and network. This is important for implementing on ground works, education, and support of environmental and biodiversity projects in our area.

We have 8 projects underway with funding value of \$1.67 million dollars, but we know that when the in-kind contributions provided by land managers and project participants are added, we can multiply this by a factor of six, making the total value of these projects something like \$10.2 million.

Our Northern Tablelands Koala Partnership project has connected us with UNE through a proposed native animal hospital, Armidale Tree Group with a proposed seedling nursery tunnel to increase capacity, Transport NSW to install signs where Koalas cross the New England Highway in Uralla, and with Department of Planning and Environment as a source of information, knowledge and

funding. There is also connecting with landholders to carry out on ground works. These works not only benefit koalas, a range of other native animals and birds improving biodiversity and habitat.

This year saw the continuation of the Drought Resilient Pasture Landscape project in partnership with UNE and GLENRAC. There are 7 groups and 40 farm businesses involved in our area. Landholders are getting skills in pasture measurements and tools to calculate stocking rate now and in the future. This expanded to stream monitoring to measure the health of the waterways in terms of water quality and ecology of landholders riparian areas.

We've partnered with Armidale Regional Council with the Malpas Catchment project, the Armidale Urban Planting Maintenance Project and support for the Community Resource Centre.

There have been 31 group events facilitated with 329 event participants and you will find these figures summarised on this financial year's 'Strategic Plan Achievements' infographic document we have available.

A key outcome and a highlight of all this activity is the positivity that results when there is funding to do great work on the ground. We've seen how being well funded affects the people involved in a very positive way, giving everyone a great sense of purpose.

Southern New England Landcare was represented at three regional workshops designed to plan the Landcare priorities for the New England region. These workshops set up governance structure and effected a partnership with Northern Tablelands LLS.

These meetings were attended by Steve, Karen, Nick, Alex and myself, and members of GLENRAC, GWYMAC, Granite Borders Landcare, NT LLS and Landcare NSW. This resulted in an application in the new program where there will be a full time Regional Landcare Coordinator for the Northern Tablelands, plus just under two full time Local Landcare Coordinator positions for Southern New England Landcare to start in February 2024.

This year's Member Musters have been well attended and included guest speakers Rachel Lawrence on Natural Capital accounting and Sarah Mika talking on riparian ecosystems. Sarah and her colleagues have been involved in the Drought resilience project getting base line data in a range of locations across the New England. Tonight, we look forward to Ray South's talk on Syntropic Agriculture.

I'd like to thank our staff team including Karen Zirkler, Struan Ferguson, Amanda Fenwicke, Des Andersen, Aggie Seiler, and Alex Hunter.

More recently, we've welcomed new team members including Beth Rosser who replaces Aggie as the Sustainable Ag project officer, Janet Hodge on reception, Janeen Robb doing Landholder Management Agreements and Matt Elsley as the new Koala Conservation Project Officer.

I would like to thank my board colleagues for their volunteer efforts, time, and deliberation over many topics this year. It has at times been challenging, but we have demonstrated that we function well as a team. Our organization is constantly evolving as circumstances and funding

Continued on page 4

Introducing Janet Hodge



In June 2023, Southern New England Landcare welcomed anew Receptionist, Janet Hodge.

Right: Janet Hodge, the new SNEL receptionist.

Janet grew up in and around Cootamundra, NSW, where her parents ran a property of sheep and cropping.

She enjoyed everything outdoors but most of her time was spent in nature on a childhood property of 1,000 ac with Cooney's Creek running through it near Jugiong, NSW.

Janet's early working life was spent in administrative roles in the health department, an electoral office and with NSW Public Works Regional Office at Cootamundra until it was relocated to Bathurst.

After finalising an administrative position for 12 months at Harden Shire Council, Janet's love of the outdoors and horses led her to embark on a 3-month adventure travelling with five horses, ridden and packed, from Jugiong, NSW, following parts of the National Trail.

Janet travelled through areas around Tumut, the edge of Canberra (Brindabella National Park), into the beautiful Kosciuszko National Park (Kiandra), past Tom Groggin Station to cross the NSW/Victorian border into Swifts Creek, Dargo, then through the Victorian Alpine National Park to settle at Higgins Hut with Snowy Range Horseback Tours.

For the next 12 months, Janet enjoyed horseback adventures with tourists guiding them across the ranges of Bennison Plains in the Victorian High Country.

Following an injury, Janet moved south to Sale, Victoria, where she mended and

then set off again to be employed at Legune Cattle Station, in the Northern Territory, enjoying nine month season of station life, colt handling/starting, farriering and barramundi fishing, and not to forget, helicopter musters.

In the following year, Janet gained employment at Walla Downs Cattle Station, Port Kembla, Western Australia, for a short five month mustering season, moving on to Stirling Buntine's Lansdowne Cattle Station in the Kimberly, where she met her now partner of 24 years.

Janet and 'Jacko' returned to his hometown of Girgarre, Victoria to raise a family and run their own dairy farm for 20 years, which became organically certified in the last few years of operation.

The decision came to finish up their dairy life and start afresh, so they purchased a farm in 2021 on the Moredun Creek northwest of Guyra, where they now run a small mob of Australian Whites along with Wagyu Cattle, and there is the added bonus of great fishing and horse riding.

Farming as it is, Janet decided to apply for the position at Southern New England Landcare. Having not worked for a Landcare organisation before, Janet was astounded by the enthusiasm and number of groups in our region.

"The works being carried out by local Landcare groups is a real achievement for the community," said Janet.

"It's great seeing farmers and fishers getting involved to increase their long term returns through better management of the natural resources, and it shows a great success for Landcare groups in our region," she said.

"In this day and age its important that communities be involved in caring for their environment, protecting species and natural assets, so that future generations can enjoy them and remain sustainable," she said.

Janet is settling in nicely and supporting members and staff on a daily basis.

She looks forward to the knowledge and friendship that will come from being involved with Southern New England Landcare.

Kristy Youman receives 2023 JWI Memorial Bequest

Kristy Youman was announced as the 2023 John Winter Irving Bequest Recipient at the 2023 Annual General Meeting on 15 November 2023.

On hearing the board's recommendation, Mrs Ona Winter-Irving said, "I'm delighted to hear Kristy Youman has been chosen for Johnno's award - he would be too."

Unable to be at the presentation, Ona wished Kristy the heartiest of congratulations.

Unfortunately, due to unforeseen circumstances, Kristy was unable to be at the AGM to receive the award.

However, the Board congratulated Kristy on her achievement and encouraged her to continue the great work she has been doing showing leadership in invasive weed control and soil health.

Kristy will utilise the bequest over the next 12 months or so, in an area of training or learning relevant to her interests. Kristy will then be invited as a guest speaker at one of our future Member Musters to share her experiences and some of her learnings.



Above - a copy of the certificate awarded to Kristy on 15th November.

Continued from page 2

opportunities change. Having a board with a range of different backgrounds and experience has been important in this evolution to where Southern New England Landcare is today.

We've been actively looking for new board members with three vacant seats. We had the welcome addition of Prof Nick Reid during this period. Nick's contribution to the board in HR, policy and strategic planning has been invaluable. Sadly, we farewelled Jill Moore-Kashima from the board. Jill has contributed on the board for 8 years. We will miss her efficient and effective manner at our meetings.

And to all our members, we would not be the organisation we are without you, what you believe in and what you do. Thank you for your support, initiatives, and efforts over the last year.

One highlight for me is the forming of small groups of concerned citizens looking after a patch of native land. Examples are the Angophora group and the Barry Munday reserve. Clearing blackberries and weeds, planting native seedlings to make it a biodiverse place they can enjoy.

After 12 years on the board of Southern New England Landcare I am sadly resigning from the Board. I take this opportunity to thank my board members for the opportunity to work with them.

Bill Perrottet, 15/11/2023

Steve Harvey offered a vote of thanks to the outgoing president for his outstanding contribution to the board of Southern New England Landcare over the last 12 years at the AGM held in Uralla on 15th November 2023. Southern New England Landcare will show its appreciation with a small gift for Bill to be presented at the board and staff luncheon on 20th December 2023.

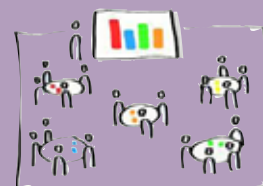
STRATEGIC PLAN ACHIEVEMENTS

July 2022- June 2023



Build & service our networks

12 Landcare groups engaged ▼ from 16
299 Members ▲ from 133
891 eNews subscribers ▲ from 861
1 Landchat newsletter
20 eNewsletters ▼ from 40
1087 Facebook followers ▲ from 1032
10 Social media groups ▼ from 11



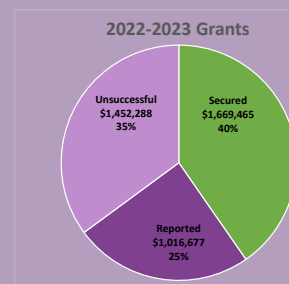
Innovative agriculture & NRM initiatives for communities

8 projects underway ▼ from 18
44 Partner organisations ▼ from 45
2 Member Musters
13 Network events ▼ from 28
31 Group events facilitated ▲ from 18
329 event participants ▼ from 715



Provide financial security

40% of grants sought were won
11 projects final reported
8 projects secured
6 grants were unsuccessful
Financials reviewed quarterly
Organisation audited annually



Build & maintain team capacity

8 Volunteer directors
8 Board meetings
6 Staff members
15 Participants in 8 staff training opportunities

Our mission is to lead, connect and enable our communities to reach their sustainability goals in a changing environment.

Read more on news and projects at www.snelandcare.org.au

2023 Member Masters

May

Southern New England Landcare's May 2023 Member Muster held on 10th May in Uralla, introduced guest speaker, Dr Sarah Mika.

Dr Mika's topic for the Muster was *The Importance of Protecting Aquatic Habitats in Agricultural & Urban Landscapes*.

"The New England Tablelands sit on the Great Dividing Range, forming the headwaters of the northern Murray Darling Basin and large coastal catchments such as the Clarence and Macleay," said Dr Mika.

"So, our land management in the New England has a large footprint."

"We affect water quality and aquatic ecosystem health over a much larger area than just the New England," she said.

Sarah's talk discussed the various aquatic ecosystems we have on the New England Tablelands, their ecological importance, how we can look after them and what the benefits of doing so are for us, and our communities downstream.

Dr Mika leads Aquatic Ecology at the University of New England, Armidale NSW.

She has more than 10 years' research experience in river and wetland ecosystems, ranging from semi-arid to coastal systems, including estuaries.

Her research focuses on biogeochemistry and ecosystem ecology, with an emphasis on catchment-scale water quality and basal resources for aquatic

foodwebs, and their use in landscape restoration.

More recently, Dr Mika has been playing an integral part as a stakeholder in the Armidale Urban Rivercare Group's (AURG) Weedy Wasteland to Wildlife Wetland project.

She developed the Wetland Plan in consultation with AURG, which once constructed will be a beautiful natural feature in our urban landscape along the Dumaresq Creek in Armidale.

November

The November Member Muster was held in conjunction with the 2023 Annual General Meeting on 15th November at the Uralla Community Centre.

Guest speaker Ray South was the 2020 winner of the John Winter-Irving Bequest.

Ray used the award funds to do an eight-day residential course in syntropic agriculture and is currently experimenting with these methods on Banded Bee Farm with co-owner Jane Pickard.

Syntropic agriculture is a system of agroforestry which attempts to mimic a forest in structure and function in both space and time.

It was developed by Ernst Götsch, a Swiss scientist turned farmer who eventually settled in Brazil.

Photosynthesis is maximised by having plants that occupy as many layers or strata as the local environment allows.

Many of the plants in the system are support species providing

2024 Member Masters

8th May 2024

13th November 2024

Join us to hear from a guest speaker, share latest news, hear about opportunities, and enjoy a light supper together.

Save the dates and watch eNews for details.

services such as nitrogen fixing, shade and/or frost protection and in situ mulch.

Disturbance through pruning encourages growth pulses throughout the system.

The ideas of syntropic agriculture can be applied to the vegetable garden, fruit and nut production, silvopasture, or shelter belts and so on.

Ray's presentation was very much enjoyed by everyone at the Muster and we wish him all the best in his syntropic endeavours.

Below - Ray South with some of the tree crops he has established at Banded Bee Farm.



Around Our Groups

More than 14 groups were represented at the Annual General Meeting held in Uralla on 15th November 2023.

During our usual 'Around Our Groups' session, group representatives shared what's been happening in their local group area since the last gathering.

Here is a brief summary:

Dumaresq: Peter Metcalfe - blackberries are taking a bit of controlling in the Dumaresq Landcare Group area recently.

Armidale Tree Group Inc: David Steller - Armidale Tree Group has been busy preparing for plantings for many of the renewable energy projects in the area, have received a number of large grants to do koala habitat plantings, building a bridge in the woodland centre and fundraising for this with expected completion date early 2024, expanding the nursery to double production from 100,000 to 200,000 and received a grant for the new tunnel house to support that.

Friends of Barry Munday Reserve: Peter Barkley - FOBMR group have had a quiet year and koala planting has been put back due to the Kentucky Tree Nursery closing, tennis court a little delayed due to the theft at the grounds, reconnection of community members is a work in progress.

Harnham: Beatrice Bashford and David Mailler - Harnham Landcare Group haven't done anything this year as a group, But in the area has hosted some events such as the Big Ridge event on bird habitat, Kristy Youman soil management workshops x 4. Still a lot to do as landholders, still only

5% of the New England has tree cover.

Retreat Landcare: Margaret England - Retreat Landcare Group is a new group with 8 new people interested who have had nothing to do with landcare before. A project on the radar is revegetating the McDonald River which has some very bare patches. LLS Bell's Turtle project, plus feral animal, and plant control, spreading the word on private land conservation.

Save the Regent Honeyeater Group: Arlene Packer - Save the Regent Honeyeater Group have run out of money with the grant. Have been working for 5 years now, mostly education of community about his very rare bird that lives in our Bundarra, Barraba region. Struan added that the consortium of LLS and the four local Landcare networks has applied under Natural Heritage Trust to the Commonwealth but is taking time.

Dangarsleigh Landcare: Steve Harvey - a few individual koala habitat projects, pulled out a lot of dead pine trees and replacing them with natives. More bushfires than work on landcare unfortunately.

People's Park Group: Helen Webb - People's Park Group are working along the creek lands in Armidale and focus more on working during the weekdays to hand weed and focus on ground cover and the small things in the plantings, working in partnership with Armidale Urban Rivercare Group. Still plenty to do in enhancing ground cover and if anyone else is keen to participate, please let Helen or SNEL know.

Angophora Bushland Reserve Group:

Helen Stokes - the reserve has a lot of grass, a few working bees to tidy up honeysuckle and blackberry, three years of rain has meant things have flourished. Walking track project has been finished by the tree group. David Steller noted Helen should be congratulated for the money and time she has put into that project.

New England Agroforestry Network: Michael Taylor - ran an oak field day on farm, several plantings going on. Just come back from Otways Agroforestry Network forum, very impressive and they have over 300 active agroforestry members down there. Hoping to run another Master TreeGrowers course in the next 12-18 months, including managing them through to harvest. 2ROG pointed out that tree cover is sitting at 5% on the New England tablelands. We know that it's around 30% where natural regeneration takes place. Natural Capital Accounting is coming to the fore, must be over 600 ha to be involved and they are looking for more properties to be involved.

Armidale Urban Rivercare Group - Bryan Johnston acknowledged Helen Stokes and Helen Webb as contributors to the work in the Urban Rivercare Group area. Weedy Wasteland to Wildlife Wetland project was delayed due to funding delays and then Bruce Whan who is a key group member has been ill. He is now on the mend and getting busy organising. Project is \$290,000 which is the biggest project they have ever managed. The area they are working on is like a small delta. Working with UNE Aquatic Research Centre to design the wetland and plants that will go

into each zone. Have planted some of the areas already. Some changes in dealing with Council over that time due to the coroner findings due to the unfortunate death of a child in the creek land area. Needs to be good line of sight in many of the areas. Some seating areas are being prepared. Been very busy. Helen Webb congratulated AURG on the amazing work they have achieved. ARC needs to sign off on an LMA, that will complement our project, for an escape route for koalas stuck in town.

Cooney Creek Landcare: Shane Andrews – Cooney Creek Landcare Group – two exciting meetings recently to facilitate treatment of fires in the local area!

Friends of Black Gully Group: Sara Schmude – biggest event they’ve ever run last weekend ‘Black Gully Festival’. Sara described the recent event, which was a great success, with more than 3000 people. Interest in works along the creek land. Aiming to get some more locals involved and get some work done. Bill congratulated Sara on her election to the board of Southern New England Landcare.

Guyra Landcare Network: Bill Perrottet – Malpas Catchment Group renamed to Guyra Landcare Network. Kristy Youman organised locals around a Chilean Needlegrass group and series of workshops and events this last year. Aggie Seiler and Beth Rosser have been instrumental in organising the group, ran a Family Frog Night using the app Frog ID. Started a working group to manage the CNG. Had a recent Mulloon Institute Bootcamp fully funded by Armidale Regional Council and very well attended. Bill has a video of before and after that SNEL can make available on the YouTube channel. The cost of implementation is very high.

New Board Members

The 2023 AGM saw two new board members elected and with both being women, our gender balance is moving in the right direction!

Here is a little background on Arleen Packer and Sara Schmude.

Arleen Packer

I was born in Victoria and raised on a sheep and wheat property in the Western district.

This area is a treeless plain so I was planting trees in the 1950's/1960's with my father when most people were still clearing land.

I came to the University of New England to Study Rural Science and studied under professor McLymont, the first to introduce the idea of ecology into a University curriculum.

I moved to Yarrowyck in the 1980's and became interested in woodland ecology. My next move was to Enmore on the New England gorges and I spent 16 years taking pack horse tours into the gorges and loved the wild land and beautiful environment.

I have taught Agriculture at TAFE for 35 years and am now living back at Yarrowyck. My interest in woodlands has been continuous and I now have a small group who run an environmental lobby called Save Our Woodlands.

Arleen is the Member (Class Guarantee) for Save the Regent Honeyeater Group, and was elected to the board on 15 November 2023 at the AGM.

Sara Schmude

Sara grew up on a grazing property in the Aberfoyle district, east of Guyra. Sara attended the University of New England, completing a Bachelor of Natural Resources (Hons).

Her research focused on addressing on-farm land degradation and building resilience in agricultural systems.

She then spent 12 years working as a Landcare Coordinator for Southern New England Landcare.

Sara has worked at Impact Ag Partners in Armidale since 2020, and chiefly manages the delivery of Natural Capital projects on agricultural land assets both in Australia and the USA.

Projects include soil and vegetation carbon, biodiversity offsetting, ecological outcomes monitoring and emissions accounting.

Sara has recently completed courses in Holistic Management, EOY monitoring, and permaculture with particular interests in community efforts to embrace regenerative agriculture and live sustainably.

Sara is the Member (Class Guarantee) for Armidale's Friends of Black Gully Group, and was elected to the board on 15 November 2023 AGM.

Board Members 2023-2024

The 2023 AGM elected the following board members:

1. Prof Nick Reid (Individual) – President
2. David Steller (Armidale Tree Group Inc) – Vice President
3. Bev Stubberfield (Uralla Rivercare) – Treasurer
4. Steve Harvey (Dangarsleigh Landcare)
5. Bryan Johnston (Armidale Urban Rivercare)
6. Peter Metcalfe (Dumaresq Landcare)
7. Sara Schmude (Friends of Black Gully)
8. Arleen Packer (Save the Regent Honeyeater)

Karen Zirkler remains as appointed Company Secretary.

Mulloon Institute Comes to the Malpas

The longstanding Malpas Catchment Group and Malpas Catchment Coordinator role have undergone a transformation in 2023, now rebranded as the Guyra Landcare Network and Catchment Coordinator.

This change aims to better reflect the crucial roles these entities play in the local community.

Elizabeth Rosser, in her capacity as the Sustainable Agriculture Project Officer, has also taken the role of Catchment Coordinator, providing an active link between the Armidale Regional Council (ARC) and the Guyra Landcare Network to work towards the goals and objectives outlined in the ARC's Catchment Water Quality Strategic Plan 2022-2023.

With the purpose of fostering knowledge and practical skills, the Mulloon Institute hosted a 3 Day Bootcamp entitled 'Rehydrating Your Landscape', funded by the ARC.

The bootcamp comprised of activities, workshops, and practical exercises, providing a hands-on experience where each participant developed individualised on-farm plans to manage their land to capture water more efficiently.

One participant highlighted the significance of the experience, stating 'The most beneficial part was being able to identify the order of the streams on your own property and the different types of structures that can be used for erosion control and to increase water retention'.

This highlights the impact of initiatives like the Bootcamp on landholders understanding and ability to contribute to sustainable land management and catchment health.

This project received funding from the Armidale Regional Council.



Above: participants at the three day Mulloon Institute Boot Camp at Urandangie, Guyra.

Introducing Beth Rosser

Sustainable Agriculture Project Officer

In June this year, Southern New England Landcare welcomed Elizabeth Rosser to the team as the new Sustainable Agriculture Project Officer.

Elizabeth comes from an extensive Agriculture background having grown up in Western Queensland before moving to Brisbane to complete her schooling.

After finishing school, Elizabeth studied a Bachelor of Nursing before the call to go west took her to Cunnamulla as a Governess. She then returned to study a dual degree in Agribusiness and Applied Science (Production Animals) at the University of Queensland.

Elizabeth has worked across Australia in a variety of industries from rural consultancy, feedlots, beef cattle, free range egg production and a very short stint milking cows.

Her favourite role was as a Project Officer for Neighbourhood Houses Tasmania on King Island, where she discovered a love of project management and facilitation while working closely alongside community.

In 2021, Elizabeth moved to the New England, with her husband and young family, to manage a beef cattle trading enterprise near Ben Lomond.

Elizabeth and her husband run the property using regenerative principals and she has a deep love of learning, people, and community.

Elizabeth is enthusiastic about her new role and is looking forward to combining her love of the land, agriculture and community.

Contact elizabeth.rosser@snelandcare.org.au.

Junior Landcare Marks 20 Years with Kick-off in Guyra

In 2023, Junior Landcare celebrated its 20th anniversary, marking two decades of encouraging young people to play an active role in ensuring the safe future of their environment.

The milestone was marked by the inaugural meeting of the Guyra Junior Landcare in October, where 9 local children came together to brainstorm and plan for future activities.

The Junior Landcarers are set to meet once per term to participate in a variety of activities including Clean Up Australia Day, tree planting, bushwalking and various other activities.

The group has also expressed an interest in exploring local nature reserves, with plans to visit Little Llangothlin Nature Reserve and Mother of Ducks Lagoon.

For more information and to register your interest for future Junior Landcare events, please contact elizabeth.rosser@snelandcare.org.au or call 6772 9123.

Family Frog Night a Ribbiting Success!

In May this year, 15 local families from the Guyra district gathered for a 'Family Frog Night', a collaborative effort with the Australian Museum.

Leslie Patterson, from the Banbai Rangers, shared her insights into cultural burning practices and the importance of Wattle Ridge Indigenous Protected area.

Emily Hotham, an amphibian ecologist from the Australia Museum, gave a fantastic presentation on the local frog species including her search for the Yellow-Spotted Bell frog which has not been seen in the Guyra area for over 40 years.

The Australian Museum is currently using sound recording equipment to survey possible locations of the Yellow-spotted Bell Frog.

To look for frogs at home, the Frog ID app is free to use and records frog song to indicate the species you can hear around your dams, creeks and in the water tank.

For more information, contact elizabeth.rosser@snelandcare.org.au or call 6772 9123.



Building Resilience in New England Agriculture with the DRPL Project

The Drought Resilient Pasture Landscapes (DRPL) Project, launched in 2022 with project lead Professor Lewis Kahn from the University of New England (UNE) in partnership with Southern New England Landcare (SNEL) and GLENRAC.

This two-year program, wrapping up in June 2024, aims to support farmers to be better equipped in managing the ever-variable climate.

Participants have been offered many different learning opportunities including pasture coaching, feed budgeting, the use of software program Ag360 for climate forecasting and a variety of different workshops held throughout the year to support the on-farm learning.

Eight farmer groups comprised of 41 different farms across the New England from Deepwater to Walcha met throughout the year to be mentored in assessing pastures, rainfall, grazing techniques, dry matter percentages, stocking rates, water quality and more.

‘This program has been well-received and provided local farmers with valuable tools to help manage their livestock and land leading into and during the dry season’, said Elizabeth Rosser from Southern New England Landcare.

‘Watching relationships form and the peer support participants have offered each other has been a privilege’, she said.

The season changed abruptly, taking many by surprise after back-to-back wet seasons, and with dropping cattle, sheep, and wool prices, many are feeling the pinch.

Elizabeth said, ‘Having each other to lean on, visiting farms and having people visit your farm, has developed some great relationships that are really important for mental health and resilience especially when times are tough’.

The Drought Resilient Pasture Landscapes Project received funding from the Australian Government's Future Drought Fund and the Armidale Regional Council.

Below: participants at the Walcha field day in November 2023.





Rebooting Our Grazing Landscapes

Southern New England Landcare (SNEL) hosted eight workshops entitled ‘Reboot Your Grazing Landscapes’ with presenters Kristy Youman and David Hardwick from Soil Land Food, and Dr. Judi Earle from AIMS.

The workshops, a series of 4 days held in both Guyra and Walcha, helped graziers in the Northern Tablelands area build on their ability to manage soil health, grazing landscapes and grazing enterprises through structured learning and skills building.

Participants increased their understanding, developed practical knowledge and skills to make management decisions in relation to different soil types, building and maintaining soil

health, identify pasture plants and their function and building a resilient, healthy, and productive grazing landscape.

These workshops supported the project goals for both the Drought Resilience Pasture Landscapes (DRPL) Project and Armidale Regional Council’s (ARC) Catchment Water Quality Strategic Plan.

‘These workshops were a complement to the pasture coaching and feed budgeting work carried out on farm by DRPL participants and to further enhance their knowledge and skills’, said Elizabeth Rosser from SNEL.

‘The workshops also met the aims of the ARC Catchment plan to help our landholders in the

Armidale LGA catchment improve farming practices for a direct impact on the water cycle’, she said.

SNEL looks forward to welcoming both David and Judi back next year for a continuation of the workshops on feed budgeting, pasture plants and interpreting soil tests.

For more information, contact elizabeth.rosser@snelandcare.org.au or call 6772 9123.

The Drought Resilient Pasture Landscapes Project received funding from the Australian Government’s Future Drought Fund and the Armidale Regional Council.

Above: participants studying soil structure and texture at the Gra workshop.

Thunderbolt's Woodlands

By Struan Ferguson

Thirty four people attended a Woodland Bird and Koala Habitat Restoration Field Day held at 'Big Ridge', Uralla on the 12th May 2023.

The event was hosted by local landholder member, Richard Munsie, and gathered landholders engaged in habitat restoration presentations, viewed several revegetation sites and experienced the magical *No Mans Land* remnant.

A rich program began in the newly built and state of the art woolshed with presentations from Guest Speakers:

- Dr. Andrew Huggett, a consultant ornithologist and ecologist from InSight Ecology whose presentation covered the Reconnecting Thunderbolts Woodlands Project and topics woodland birds as indicator species for the health of woodlands and what constitutes functional habitat for woodland birds.
- Richard Munsie, host landholder spoke of his experiences with successful revegetation and hosting a solar farm.
- Des Andersen, Koala Conservation Officer with Southern New England Landcare's Northern Tablelands Koala Partnership Program at the time, presented on the importance of connected habitat for Koalas.
- Gordon Williams, landholder and long-time practitioner of habitat restoration within a whole farm framework, share his wealth of experience and his 'Four Ps of Successful Revegetation'.

Richard led a guided tour of revegetation sites across his property that are at various stages

of development, including:

Stop 1 - a landscape view of 'Big Ridge' including New England Solar Farm and six year old plantings from 2017.

Stop 2 - inspect six month old plantings and the use of mounding in ground preparation completed under the Thunderbolt Project 2022.

Stop 3 - inspect five year old plantings completed under Closing the Gap Project 2018.

Stop 4 - view six year old plantings and direct seeding in remnant woodland completed under Closing the Gap Project 2017.

"This was a beautifully organised, enjoyable and helpful day - thank you Landcare team, Richard and Lou," said one participant in the event evaluation.

"Seeing the old remnant woodland was brilliant," said another.

"Well planned. Good to have formal talks and outside activities," said another.

This initiative has been made possible with funding from the NSW Environmental Trust, the Northern Tablelands Koala Partnership Program, and the Australian and NSW Governments.

Below - participants inspect the 6 year old plantings. Bottom - Andrew Huggett speaks in the middle of 'No Man's Land' remnant.



2020-2023 Re-connecting Thunderbolt Country Project Wrap Up

The 2020-2023 Re-connecting Thunderbolt Country Project progressed in fits and starts due to several factors including:

- Covid-19 and state legislated lockdown
- slow to re-establish plant stock numbers at nurseries after the 2017-19 drought
- delay in delivery of some fencing materials due to



Top - Big Ridge proposed planting, courtesy Andrew Hugget.
Middle - Scarlet Robin, courtesy Andrew Hugget.
Bottom - Old Angophora in No Man's Land remnant, courtesy Andrew Hugget.

flooding in other areas of the state and

- a couple of very wet years locally (including some localised flooding events) which made accessing some sites impossible for much of the time.

Despite these challenges, 10 landholders, including Uralla Shire Council, committed to restore functional habitat connectivity on 14 sites in the east-west gap of the Southern New England Tablelands (around Uralla, Kentucky, and Salisbury Plains) protecting threatened species, restore habitat connectivity for threatened fauna and flora.

The project achieved protection of 26.03 ha of remnant woodland and wetland, thereby protecting threatened species, populations, and ecological communities. Importantly, a 20.2 ha area of New England Peppermint (*E. nova-anglica*) has been protected.

The project achieved 34 ha of revegetation with 11,791 seedlings comprised of 33 different species of local native trees, shrubs, and ground covers. Overall, 6 km of protective fencing was erected within the project area of 50.06 ha. In addition, weeds and pest species were controlled in the project area.

Two project events were held; 12 landholders participated in an online planning workshop on 1 July 2020 and 34 people attended Thunderbolt's Woodlands - Restoring Woodland Bird and Koala Habitat Field Day on 12th May 2023.

Dr Andrew Huggett of Insight Ecology fulfilled the role of Consultant Ornithologist for the project. His invaluable contribution included assisting development of the initial grant application, being a guest speaker and presenter at project events, conducting four ecological surveys at 18 project sites and preparing the associated Bird Survey Reports, developing the project booklet and not least, introducing field day attendees to the magical and rarely experienced No Man's Land Remnant.

See Andrew's Bird Survey Reports at: <https://www.snelandcare.org.au/resources/publications/1819-2020-2023-reconnecting-thunderbolt-country-avifauna-surveys.html>

Thanks to the 15 landholders who participated in the project and Andrew Huggett all of whom contributed a significant number of hours of in-kind to the project.

2020-2023 Re-connecting Thunderbolt Country for Threatened New England Woodland and Wetland Biodiversity Project was funded by the NSW Environmental Trust under their Restoration and Rehabilitation grants program.



Northern Tablelands Koala Partnership Project Update

Story by Matt Eslely

The Northern Tablelands Koala Partnership Project is part of the NSW Koala Strategy and has been established to incorporate local expertise and enable key partnerships to ensure on-ground actions and conservation outcomes are delivered in a strategic way.

The Northern Tablelands has been recognised as one of the most significant areas for koalas away from the east coast, and key stronghold populations including Armidale's Koalas have been identified under the NSW Koala Strategy.

The inland cool temperate-climate forests throughout the Northern Tablelands are a key climate refugia, being more naturally resilient to the effects of climate change and will become increasingly crucial for the survival of Koalas into the future.

The ongoing partnerships and funding support facilitated by the Northern Tablelands Koala Partnership Program are essential factors in ensuring we can achieve lasting conservation outcomes for Koalas into the future.

Koalas are considered an 'umbrella species', meaning if Koalas are thriving, so are many other species. By investing in and protecting koalas and their habitat, conservation outcomes for many other species and ecosystems also begin to improve.



Right top - key areas of the NSW Koala Strategy.

Right - The Southern New England Landcare display at the Black Gully Festival, 2023.



Landchat - Landcare in Southern New England

Achievements under the four key pillars

The NSW Koala strategy is driven by four key pillars focussed on Koala habitat restoration, community conservation and partnerships, Koala health and safety, and building our knowledge.

The Partnership has achieved some significant progress in these areas, some of which are outlined below.

Koala Habitat Restoration:

- 65ha of revegetation on private lands
- 321ha of remnant forests protected
- 44290 seedlings planted
- Development of a Priority Koala Habitat map to inform landscape connectivity and restoration activities.
- Facilitating a funding opportunity for the Armidale Tree Group to double production with a new seedling raising tunnel
- Additional funding from DPE and LLS for habitat restoration into 2024 has been secured, so get in touch if you have an area you want to undertake conservation work on!

Community Conservation and Action:

- Eight community events including the Black Gully Festival, Autumn Parade, Connecting to Country, and UNE Orientation Days
- School education and engagement
- Project underway for community signage along Dumaresq Creek

Continued on page 16

Introducing Matt Elsley Koala Conservation Project Officer

In October this year Southern New England Landcare welcomed Matt Elsley to the team as the Koala Conservation Officer for the Northern Tablelands Regional Koala Partnership.

Matt is excited about his Koala Conservation Officer role with Landcare.

“This role provides an opportunity to actively develop and collaborate on threatened species conservation and strategies using my scientific knowledge and ecologically focussed background,” said Matt.

The Northern Tablelands holds some of the most significant Koala populations away from the coast and is a valuable region for many other threatened species, as well as being key area for climate refugia into the future.

Matt is keen to use his skills and knowledge of this region for Koala conservation, which will also support many other species as a result.

“I hope that by bringing together the community, and the many other groups and agencies already working for our region’s ecology, we can enhance and foster collaborations and partnerships and achieve significant outcomes for conservation,” he said.

Matt moved up to Armidale from the coast in 2014 to Study at UNE, where he completed degrees in Environmental Science, Geology and Archaeology.



Above: Matt Elsley joined the Southern New England Landcare team in October 2023.

After volunteering for some ecologically focussed work towards the end of his degree, Matt decided to double down into ecology and uses the diverse range of skills he has learned to allow him to approach ecology with a multidisciplinary mindset.

Since then and before joining Landcare, Matt has been working as an environmental scientist and ecologist specialising in fauna ecology and has extensive experience in ecological monitoring and surveying.

He has a keen interest in conservation and climate adaptation and is excited to develop and contribute to projects that enhance both scientific and community understanding of animals and their environments to best prepare and enhance their resilience into the future.

Matt also has strong ties to the local community through his volunteer role as Commander of the Armidale State Emergency Service.



Have you seen a Koala?

The 'I Spy Koala' app is being updated to enhance our understanding of endangered regional Koala populations.

While the 'I Spy Koala' app is being updated, please send sighting information (including injured Koalas) by using the QR code or contact Matt, below. We'd love to hear about your sightings!

I Spy Koala Form



Matt Elsley, Koala Conservation Officer



Remember to seek help for sick or injured Koalas by contacting:

WIRES - 1300 094 737, OR Northern Tablelands Wildlife Carers - 1800 008 290

Contact matt.elsley@snelandcare.org.au or call 6772 9123 with any questions.



The Northern Tablelands Koala Partnership is hosted by Southern New England Landcare Ltd, supported with funding from the NSW Department of Planning and Environment.



financially funded by




Continued from page 15

- Distributing koala knowledge packs and sightings information flyers
- Promoting and receiving community koala sightings

Koala health and Safety:

- Koala vehicle strike strategy completed at Uralla Golf Club/New England Highway hotspot, leading to permanent signage and reduction in strikes during last breeding season
- Koala drinker program pilot completed
- Concept planning for UNE Native Animal Research and Rehabilitation centre
- Workshops for carers on koala traps and care, including trailing trap monitors to enhance Koala safety and wildlife carer fatigue management
- Local vet training with Port Macquarie Koala Hospital

Building our knowledge:

- 3 annual survey monitoring programs completed to gain insights into the local Armidale population and supporting the development of regional surveys with DPE
- Contribution to Regional Koala Strategy
- UNE genetic database collection from in-care and deceased koalas
- 140 sightings submitted to BioNet.



Left top - how to report a koala sighting in our area.

Left - participants at the last koala trapping workshop.

NT Koala Partnership in 2024

Into the next year, in addition to continuing our efforts in habitat restoration, community engagement, koala health and care and research, the Northern Tablelands Koala Partnership Program is doubling down on enhancing our stakeholder networks and connecting key partners and experts more regularly and meaningfully, so that we can strategically drive

conservation outcomes.

Our partners and stakeholders are our most important assets and hold a wealth of expertise and knowledge that can ensure funding and conservation management can be targeted where it is needed most.

Our current partners include Councils, the University of New England, NPWS, LLS,

expert ecologists, landholders, wildlife carer networks and local community groups – we're always on the lookout for other people and groups who have a passion for koala conservation, so get in touch if we haven't already!

Contact Matt Elsley at matt.elsley@snelandcare.org.au or on 02 6772 9123.

Koala Trapping and Trap Monitor Workshop

Based on the positive feedback from 2022, we are looking to support wildlife rescuers and carers by running another koala trapping workshop, this time including the use of remote trap monitors!

Gaining confidence and skills in new passive koala trapping techniques greatly reduces stress for Koalas when they have been identified in a tree with an illness or injury and need to be brought in for veterinary care.

Our new trap monitors mean that rescuers will be alerted remotely when their traps are activated, removing the burden of frequently checking traps for Koala safety and reducing the fatigue and time commitment for our volunteer carers. Submit an EOI using the QR code below.

Eucalyptus ID Workshop

We are looking for EOIs from landholders, wildlife carers and anyone interested to learn about Eucalyptus species identification to participate in a 2-day Eucalyptus ID course run by the NSW Herbarium!

The course includes a day of theory, followed by a field trip, and participants will be given specially produced guides.

Getting a good working knowledge of eucalyptus ID is important if you are thinking of planting on your property, reporting on species present when you report koala sightings, and ensuring that koalas can be fed the appropriate tree species when in care after rescue.

Spaces are limited so get your EOIs in! Dates to follow, with the course expected to be run early 2024. Submit an EOI using the QR code below.

Bushfire Support Wildlife Carer Workshop

Together with WIRES and RFS, we are facilitating a workshop for wildlife carers and rescuers to equip them with knowledge and skills specific to bushfire scenarios.

This workshop will give participants confidence in how to approach rescues and wildlife care in complex bushfire environments, including the processes and systems specific to emergency management agencies and how they relate to wildlife rescue.

The increase in frequency and severity of bushfires are one of the biggest threatening processes for many native species, making these skills invaluable into the future.

Places will be limited so submit and EOI if you are interested using the QR code below.

Eucalyptus Identification Workshop EOI



Koala Trapping and Trap Monitor Workshop EOI



Bushfire Support Wildlife Carer Workshop EOI



Koala Vehicle Strike Mitigation Project

Story by Janeen Robb

A Key Focus Area of the NSW Koala Strategy was to mitigate deaths and injuries of Koalas by vehicle strikes.

The Northern Tablelands Partnership Project (NTKPP) was informed of an identified vehicle strike “hotspot” adjacent to the Golf Club on New England Highway, just south of Uralla.

With the support of key stakeholders including WIRES, Northern Tablelands Wildlife Carers, the local community,

Uralla Golf Club and Uralla Shire Council, The NTKPP aimed to mitigate this threat to our local Koalas.

The project adopted a multi-pronged approach to address the issue. It commenced in September 2022 and ran until February 2023.

Facilitated by Southern New England Landcare (SNEL), the NTKPP teamed up with Uralla Shire Council and Uralla Golf Club to deliver actions and information to the community to help reduce vehicle strikes.

The Golf Club and its patrons, the Uralla Council and members of the local community were all keen to learn how they could help protect Koalas.

There is strong public support for helping reduce harm to local Koalas by vehicle strikes. Uralla Golf Club will continue slashing/whipper-snipping along roadside on the east side of the highway.

Traffic NSW are supportive of our efforts to reduce death and injury to Koalas and they will continue slash a narrow strip on the west side if the hotspot zone.

The signage has alerted locals and importantly passing traffic of the likelihood of Koalas in the area.

The community has been updated with information about the local Koala population, improved verge visibility due to slashing, and the community awareness campaign.

Since the deployment of the VMS and the extra slashing, no deaths or injuries have been recorded in this area!

Two of the yellow diamond signs have since been installed by Council at either end of the section of highway adjacent to the golf course.

There is a potential to have these replaced by electronic messaging signs with funding from a Traffic NSW grant opening in August 2024.

SNEL will continue working with all stakeholders to keep the community informed of progress and invested in caring for the environment, our local threatened Koalas in particular.

Left - the new diamond koala warning signs installed by Uralla Shire Council on the highway near the golf course.



Introducing Janeen Robb



Southern New England is excited to welcome Janeen Robb to the team in the role of Landholder Management Agreement (LMA) Project Officer.

"I've been involved in a wide range of projects such as Office of Environments & Heritage's Dryland Salinity Project, monitoring the importance of remnant vegetation to native birds, Armidale TreeGroup's early dieback tree planting projects, and a vegetation mapping project form the Murray-darling Basin Commission," said Janeen.

"I particularly enjoyed my involvement in a joint Landcare/ Aboriginal Land Council Cultural Heritage project, working with the local Aboriginal community and landholders to identify artefacts and sites of cultural interest," she said.

Over the last few years, Janeen has worked on several environmental and artistic community projects.

"Working with young people to create giant puppets for the Uralla Youthfest and Armidale Autumn Festival was also lots of fun," said Janeen.

Janeen came to Armidale to study Botany, Ecology, and various natural resource management courses at the University of New England.

She then stayed in the local area and raised a family, during which time she worked as a casual environmental consultant.

Janeen is looking forward to getting to know Southern New England Landcare's members, helping them with their plans for improving habitat on farms, and supporting other team members.

"After years of doing environmental work from behind a computer, it really is fantastic to be getting back outdoors!" said Janeen.

Janeen can be contacted on 02 6772 9123 or at janeen.robbs@snelandcare.org.au.

eNews Update Register as a Member to remain a recipient

Our fortnightly eNews (via email) keeps you updated on landcare news and events in our region; opportunities to be involved in projects; workshops and a range of community initiatives.

We value the community's interest in our organisation and we want to make sure everyone continues to receive updates, so please share this information.

Commencing in April 2024, ongoing receipt of eNews will be exclusively member based. Individual membership is free, so there is no need for folks to miss out!

As a recipient of Landchat, you are already a member, so this reminder is for the benefit of anyone you know whose membership is out of date.

Have them register on our website at <https://snelandcare.org.au/membership/become-a-member.html>.

Any queries about membership can be emailed to memberships@snelandcare.org.au or call the office on 6772 9123.

Congratulations Michael Taylor

On 12th September, Michael Taylor, landholder at Kentucky and member of Southern New England Landcare, was awarded one of 24 Nuffield Scholarships – a well-deserved Award to a hard-working knowledgeable local farmer.

Michael received his scholarship for drought resilience.

"Drought Resilience Scholars will be investigating innovative practices to help Australian farmers and communities withstand the impacts of drought," explained Jodie Redcliffe, Nuffield Australia's CEO.

Drought resilience has become a major focus of this year's Nuffield program, with five new Scholarships run by the Federal Government's Future Drought Fund.

Michael will study solutions to the challenges that hinder the widespread adoption of agroforestry. Michael has built a reputation around his future-focused approach to farming and management of his Kentucky property running merino sheep and mixed angus cattle, while also operating a timber mill and farm stay accommodation, making him very diversified.

Silvopasture 2021, an event focusing on agroforestry techniques and application, was founded by Michael, and supported by Southern New England Landcare.

The event proved very successful, drawing people from the local region, Victoria, ACT, Queensland and overseas.

Southern New England Landcare congratulates Michael for his achievement.

More recently, Michael attended COP28 in the United Arab Emirates to speak. A video can be seen at <https://www.youtube.com/live/JIQhuA2pAP4?si=FLGR96LsUhuvcZD4>

From Weedy Wasteland to Wildlife Wetland

By Armidale Urban Rivercare Group member Angus Adair

What a busy 2023 has been for the Armidale Urban Rivercare Group (AURG) on their Weedy Wasteland to Wildlife Wetland (WW2WW) project!

It started with continued clearing for the wetland of the remaining willows, removing flood debris and then getting sites ready for planting.

Before winter set in we were able to get in about 1,500 grasses – mainly *Juncus*, *Carrex* and *Lomandra* and since spring they have literally jumped out of the ground.

These plants are now 50 cm high and out-competing the weeds. Some of the *Carrex* is even flowering!

After a short winter break we then worked up to a huge spring planting program.

The aim was to plant 9,000 plants in 2023 and with a delayed autumn planting we were looking at about 7,000 plants in spring 2023!

We have successfully engaged with Armidale Secondary College, The Armidale School and New England Girls School to plant 2,200 plants.

In addition to that, AURG volunteers have planted another 6,800 grasses and shrubs to make a grand total of close to 9,000 in just over six months.

The AURG Contract Team incorporating Bruce Whan, Gordon Bell, John Fitzgerald, Delmar Parker, Mike Lewis and Angus Adair, have also learnt how to install logs in the wetland as hydraulic jumps.

This is to ensure water aeration occurs at low flows and keeps the creek alive!

A huge thanks to Dr Sarah Mika from UNE for her assistance on this.

Unfortunately at the end of September we had a vandalism event where 380 of 1,000 grasses were pulled out – perpetrators unknown!

However after a mammoth effort with volunteers we were able to rescue 350 of those plants and get them back in the ground – and most of those have survived.

The year ahead

2024 will see ongoing maintenance of the current plantings to ensure they get a good head of steam before next winter and the weeds taking over.

We are also looking to finalize the program by June 2024.

To do this we still have to:

- Plant another 2,500 plants in autumn;
- Put in paths on the south side of the wetland.
- Install two picnic tables and one wharf bench around the wetland;
- Plant some dryland areas mainly on the south side of the wetland and mostly trees;
- Finalize preparation of the grassed areas so Council can come in and mow and maintain the site.
- Get interpretive signage up around the site – promoting the project and AURG/SNEL!

This project was funded by the NSW Government's Stronger Country Communities Fund.



Left - Contractor felling willows on wetland site. Right top - AURG members removing logs from Dumaresq Creek. Right middle - Example of log sills installed within the braided section of the creek. Right bottom - AURG members planting grasses on wetland site. Images courtesy of Bruce Whan and Angus Adair.



Southern New England Landcare's Regional Award Winners!

On 26th May, Tamworth Regional Landcare Association hosted the Regional Landcare Awards for the New England and North West of NSW.

Congratulations to the Southern New England Landcare members, groups and projects who took out the award in three different categories:

- Steve Harvey - Individual Landcarer winner 2023
- Northern Tablelands Koala Partnership Project - Partnerships for Landcare winner 2023.
- Armidale Urban Rivercare Group - Landcare Community Group winner 2023/



Below - Bruce Whan received the award on behalf of Armidale Urban Rivercare Group.



2018-2023 Turning the Tide on Threatened Species

Regent Honeyeater Project

Story by Struan Ferguson

The Regent Honeyeater is a unique Australian songbird on the verge of extinction, with as few as 250 - 300 estimated to survive in the wild.

The Northern Tablelands is historically significant for the conservation of this critically endangered species as breeding pairs have been known to establish nests in our region.

This project, now concluded, was delivered by the Northern Tablelands Regional Landcare Consortium – a partnership between Northern Tablelands Local Land Services (NTLLS) and the four Landcare Networks on the Tablelands: Southern New England Landcare SNEL (Armidale), Glen Innes Natural Resources Advisory Committee GLENRAC (Glen Innes), Gwydir Macintyre Landcare GWYMAC (Inverell) and Granite Borders Landcare Committee GBLC (Tenterfield).

The project sought to gain the support of the community to raise awareness of the Regent Honeyeater, and to empower and assist the community with resources and funding to take actions that address threats to the species.

The project delivered priority actions identified in the National Recovery Plan for the Regent Honeyeater that address threats and improve the amount and quality of habitat for the species.

Key project activities included:

NTLLS - Improving extent and quality of habitat for Regent Honeyeaters (through fencing, revegetation, weed control, noisy

miner and other pest animal control, honeybee management, thinning, community education)

NTLLS - Increase understanding of the size, structure and population trends of wild populations of Regent Honeyeater (community bird surveys, formal bird surveys (nesting, breeding, feeding), habitat monitoring, promote/educate community to report sightings, local research projects)

GBLC, GLENRAC, GWYMAC, SNEL and NTLLS - Maintain and increase community awareness, understanding and involvement in the recovery program (community education events - bird watching, on ground practices, farm planning, publications, planting events).

The project aimed to support and encourage landholders and community members to be involved in the conservation of the Regent Honeyeater and other threatened woodland birds.

NTLLS supported ongoing monitoring of critical breeding and foraging habitat evaluated breeding success at key sites and at other known or suspected Regent Honeyeater sites.

The project implemented a broad strategy of education and awareness raising of the need for Regent Honeyeater conservation and continue to inform, support and encourage landholders and community members to be involved in the conservation of the Regent Honeyeater and other threatened woodland birds.

Community members were invited to join Regent Honeyeater Focus Groups via

their local Landcare Network.

SNEL's contribution to the project included four training/awareness raising field days attended by 96 adults and 24 school students with presentations from notable guest speakers such as Dr Stephen Debus, Dr Paul McDonald, Dr Armad Barati (UNE), Dr Ross Crates (ANU), Dr David M Watson (CSU), Peter Metcalfe (UNE retired), Kristy Peters, Emily Mowat, Candice Larkin of Birdlife Australia, and Leoni Pascua (Taronga Western Plains Zoo).

The events covered Regent Honeyeaters and their habitat, Noisy Miners as a threat, Northern Tablelands woodland birds, importance of mistletoes as a food source and the captive breeding and release program at Taronga Western Plains Zoo.

SNEL also ran eight Save the Regent Honeyeater Group Action Plan workshops and reviews with 12 group participants, and 13 Save the Regent Honeyeater Focus Group meetings attended by 9 members.

Approximately 915 people were engaged at 10 awareness raising events such as stalls and presentations.

Five school presentations and bird watching events with Birdlife Australia staff were attended by 95 students and 10 teachers.

Four small school plantings of RHE preferred species took place at Kingstown Public School (3) and Kentucky Public School (1).

The project was supported



Above: Regent Honeyeater Courtesy of Dean Ingwersen.



Left: Margaret England, Arleen Packer, Struan Ferguson and Euan Belson – Three Handed Vote. Courtesy of Karen Zirkler.

Below - Regent Honeyeater logo courtesy of Northern Tablelands Local Land Services.



with funding over five years by the Australian Government's National Landcare Program.

All sightings of Regent Honeyeaters should be reported to BirdLife Australia, online or on 1800 621 056.

This project was jointly funded through Northern Tablelands Local Land Services and the Australian Government's National Landcare Program.



If undeliverable return to Southern New England Landcare,
Suite 10, 128 Beardy Street, PO Box 85, Armidale 2350.
Tel 02 6772 9123, mail@snelandcare.org.au.

Landchat
Print Post Approved
PP 255003/09214



PRINT
POST

POSTAGE
PAID
AUSTRALIA

Landchat

Landcare in the Southern New England, No. 122, January - December 2023



Southern
New England
Landcare

Landchat presents a forum for the expression of a range of opinions. While every effort is made to publish accurate information, Southern New England Landcare Ltd and its employees do not accept responsibility for statements made and opinions expressed in this newsletter.

Our activities are supported by:



Need Insurance

for your farm, equipment, car or household?

We recommend Wesfarmers Federation Insurance, proud supporters of Landcare.

Mention you are a member of Southern New England Landcare, and 3% of the value of your premium is returned to us to support projects!

Contact David de Ferranti on
1300 934934 or 0412 328 911.



This initiative is made possible by the NSW Landcare Program.

A collaboration of Local Land Services and Landcare NSW supported by the NSW Government.

